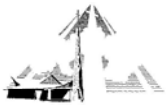


#7



ST. MICHAEL LUTHERAN CHURCH & SCHOOL



3595 Broadway, Fort Myers, FL 33901 (941)-939-1218 WWW.SML.ORG

Non Profit Org.
U.S. Postage
P A I D
Fort Myers, Florida
Permit #97

Who's doing what and how are they connected to our ministry? The chart below shares with you the professionals that are being utilized as part of the Imagine project. What a fantastic array of organizations and individuals. Notice the connection to the ministry. Ephesians 3:20-21 presented in 'living color'!

Architect

**Gora / McGahey
Associates in Architecture Inc.**
43 Barkley Circle Suite 202
Fort Myers, FL 33907
(941)-275-0225

Dan McGahey: Principle Arch.
(Parent of Former SMLS Students)
Bryan Rose: Project Manager

Marketing Designs

Traverso & Associates
1705 Colonial Blvd.
Fort Myers, FL 33907
(941)-278-4700

Kit Traverso
(Parent of Former SMLS Students)
Adrian

Printed Materials

Press Printing Company
3601 Hanson Street
Fort Myers, FL 33916
(941)-334-1238

Rich Wagoner
(Parent of Former SMLS Students)

General Contractor

Benchmark Inc.
16836 McGregor Blvd.
Fort Myers, FL 33908
(941)-466-1590

Mark Anderson
(Parent of Former SMLS Students)

Civil Engineering

Source Inc.
1334 Lafayette Street
Cape Coral, FL 33904
(941)-549-2345

Jim Elliott
*(Parent of Former SMLS Students &
SML Member)*
Larry Hooper
*(Parent of Former SMLS Student &
SML Member)*

Structural Engineering

Jenkins & Charland Inc.
12381 S. Cleveland Ave.
Fort Myers, FL 33907
(941)-939-1414

Gary Foreman

MEP Engineering

[Mechanical, Electrical, Plumbing]

**TLC:
Tilden Lobnitz Cooper**
1400 Colonial Blvd. Suite 203
Fort Myers, FL 33907
(941)-275-4240

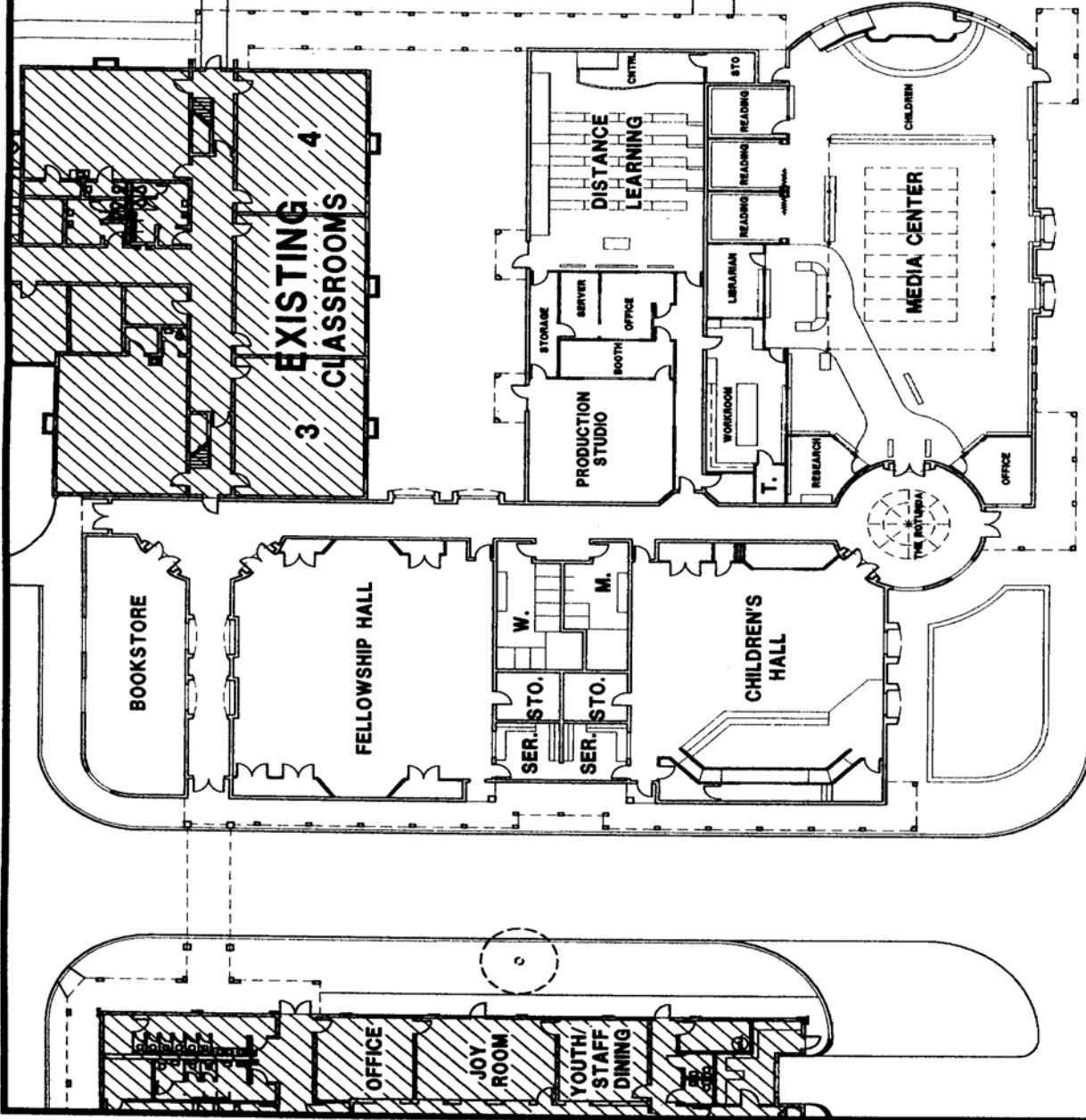
James Keohane
(Parent of Current Student)
James Buehler
(SML Member)

Component Pieces



Information Center

1. School and Church bookstore combined into one main store.
2. Fellowship Hall to replace existing hall.
3. Service / Storage & Restroom area. A Women's restroom for the county to talk about!
4. Children's Hall for the Sunday Way Station, Youth ministry, School assemblies, Fine Arts programs etc...
5. Media Center to expand current library and provide multi level information access.
6. Distance Learning center for advanced instruction and enrichment.
7. Production Studio relocated and multiple sets established with additional instruction.
8. Technology servers and office relocated.



INFORMATION CENTER
NOT TO SCALE

IMAGINEF07

IMAGINEF07